



Accelerating business evolution



Business Management Software for Small to Medium Manufacturers

Caliach Vision – the foundation of success

The system operates under Microsoft Windows, Apple Macintosh and Linux operating systems, and can be deployed multi-platform in a mixed local area network environment. Wide area network support is available through thin client technologies such as Microsoft Terminal Services and Citrix.

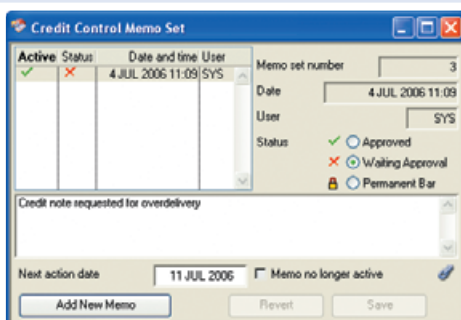
A critical success factor in the implementation and operation of any enabling technology is ease of use. Caliach Vision has been designed to simplify and speed processing with an ergonomic and intuitive Graphical User Interface (GUI). Users can be empowered with a customised working environment, including a structured function navigator complete with personalised help.

Reflecting modern working practices, multiple tasks and windows can be active simultaneously and interactively, while extensive drag-and-drop and drill-down capabilities further increase efficiency. Staff costs are further reduced with comprehensive pop-up help and an integrated, searchable reference system.

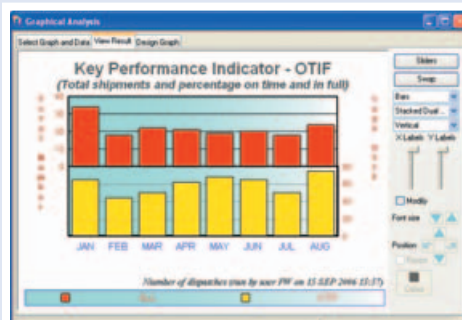
Caliach Ltd is an acknowledged expert and innovator in manufacturing management systems. Our aim is to exploit the latest technology to deliver simple, powerful, affordable business management software.

Established in 1990, Caliach Ltd pioneered enterprise resource planning software for small to medium-sized manufacturers, driving the industry standard for the sector. Multinational manufacturing experience led to steady growth in our user base, and our systems have proven themselves in a wide range of industries.

We are committed to providing the highest quality products, backed by responsive customer service and support. Our objective is to establish Caliach Vision and future products as standard management tools for small to medium-sized businesses, just as office and accounting programs are today. With Caliach Vision, manufacturing excellence is no longer the exclusive preserve of large corporations.



Credit Control



Graphical Display of Key Performance Indicators

Description type	Costed Costs				TOT (to 2)
	Material	Labour	Overhead	Net. Costed	
Dispatch to customers	-6,198,877	-480,867	-1,124	-6,680,868	-6,680,263
Return from customers	0.000	0.000	0.000	0.000	0.000
Receipt from suppliers	38,275,240	0.000	0.000	3,232,532	38,987,772
Return to suppliers	0.000	0.000	0.000	0.000	0.000
General issue	-6,121,377	-442,204	-103,530	-652,047	-680,858
General receipt	0.000	0.000	0.000	0.000	0.000
MR dispatch to sub. (C)	0.000	0.000	0.000	0.000	0.000
MR return from sub. (C)	-0.000	-0.000	-0.000	-0.000	-0.000
MR comp. issue to P/O	-6,304,772	-83,220	-1,836	-334,769	-6,724,297
MR comp. return from P/O	0.000	0.000	0.000	0.000	0.000
Receipt from P/O	7,287,880	187,776	4,440	868,048	8,248,144
Adjustments - Quantities	-630,949	-452,712	0.000	93,141	-1,030,520
Period start stock value	68,306,795	1,811,874	11,872	4,221,280	74,350,821
Period end stock value	53,283,776	1,508,867	328,722	3,724,642	58,546,007
Period change in stock value	-15,023,019	-3,022,007	-10,144	-5,526,638	-15,581,808
Average per working day	1,827,838	68,976	-14,275	-68,215	1,811,134

Inventory Movement by Cost

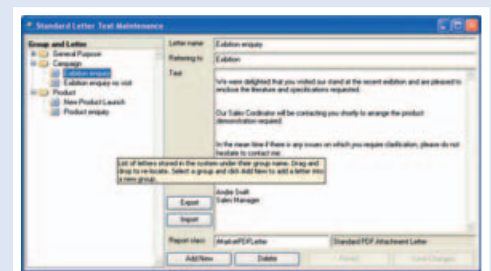
... empower your business to succeed ...

Benefits that can be realised from a successful implementation of Caliach Vision include:

- Reliable stock availability and faster stock rotation
- Improved supply chain performance and delivery accuracy
- Fast, accurate cost estimating and secure pricing
- Improved productivity and resource utilisation
- Rapid and effective response to change
- Better management of business growth and product complexity
- Greater administrative efficiency
- Improved customer satisfaction and retention
- Increased profitability and return on capital
- Tighter financial controls and cashflow management



Graphs Embedded in Reports



Standard Letters for Customers, Suppliers, Prospects and End Users



A Complete Business System

- Scheduling
- Costing and estimating
- MRPII
- Customer and Supplier Relationship Management (CRM/SRM)
- Sales Orders
- Purchase Orders
- Product and Order Configuration
- Works Orders
- Jobs
- Stock Control
- Bills of Material
- Quality Data and Traceability
- SFDC
- Accounts

For Companies:

- Make-to-Order
- Engineer-to-Order
- Configure-to-Order
- Make-to-Stock
- Schedule Orders
- Batch Production
- Jobbing

For Industries:

- Aerospace
- Automotive
- Biotechnology
- Chemicals
- Components
- Education
- Electronics
- Engineering
- Furniture
- Instrumentation
- Jewellery
- Metals Trading
- Packaging
- Plastics and Rubber
- Pneumatics
- Precision Engineers
- Scientific
- Sports Equipment
- Telecommunications
- Television
- Textiles
- White Goods



Caliach Limited

Cedar House, Vine Lane, Hillingdon, Middlesex UB10 0BX England
Tel: 01895 230203 Fax: 01895 230233 International: Replace 0 with +44
Email: sales@caliach.com www.caliach.com